

## Modulor

### Product Specifications

Style Name	Any Which Way
Style Number	40079
Product Type	Tile
Surface Texture	Multilevel Loop
Pile Fibre Content	100% BCF Anti-Static Colorloc nylon
Dye System	Solution Dyed
Primary Backing	Non-Woven Polyester
Secondary Backing	Fiberglass Reinforced Thermoplastic

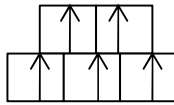
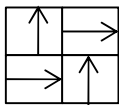
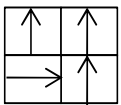
	<b>Imperial</b>	<b>Metric</b>
Pile Weight	20 oz / s.y.	678 g/m <sup>2</sup>
Gauge	1/12 ga	47.2 / 10 cm
Stitches	11.0 / in.	43.5 / 10 cm
Pile Height	.140 in.	3.5 mm
Pile Thickness	.118 in.	3 mm
Density Factor	6102	11.9 ktex
Total Weight	108.41 oz / s.y.	3675 g/m <sup>2</sup>
Width	19.68" x 19.68"	50 cm x 50 cm

### Performance Specifications

Flammability	Meets ASTM E-648 test standards Radiant Panel Class I
Smoke Density	Meets ASTM E-662 test standards <450 Flaming mode
Anti-Static Properties	Less than 3.0 kv at 20% R.H.. & 21° C
Dimensional Stability	Less than 0.05 %
Lightfastness	L5 or Better
Resistance to Wet Cleaning	Grey Scale 5

#### Installation Method's

Non Directional, Quarter-Turn, Brick



Non Directional

Quarter Turn

Brick

### Warranty Information

- Limited Lifetime Commercial Wear & Anti-Static
- Limited Lifetime Against Delamination
- Limited Lifetime on Dimensional Stability
- Limited Lifetime Against Backing Deterioration

### Environmental

Indoor air quality no. GLP 3315