

## Modulor

### Product Specifications

Style Name	Venice
Style Number	40004
Product Type	Tile
Surface Texture	Multilevel Loop
Pile Fibre Content	100% BCF Anti-Static Colorloc nylon
Dye System	Solution Dyed
Primary Backing	Non-Woven Polyester
Secondary Backing	Fiberglass Reinforced Thermoplastic

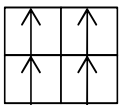
	<b>Imperial</b>	<b>Metric</b>
Pile Weight	20 oz / s.y.	678 g/m <sup>2</sup>
Gauge	1/12 ga	47.2 / 10 cm
Stitches	10.0 / in.	39.4 / 10 cm
Pile Height	0.140 in.	3.5 mm
Pile Thickness	0.118 in.	3.0 mm
Density Factor	6102	10.8 ktex
Total Weight	108.41 oz / s.y.	3675 g/m <sup>2</sup>
Width	19.68" x 19.68"	50 cm x 50 cm

### Performance Specifications

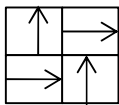
Flammability	Meets ASTM E-648 test standards Radiant Panel Class I
Smoke Density	Meets ASTM E-662 test standards <450 Flaming mode
Anti-Static Properties	Less than 3.0 kv at 20% R.H.. & 21° C
Dimensional Stability	Less than 0.05 %
Lightfastness	L5 or Better
Resistance to Wet Cleaning	Grey Scale 5

#### Installation Method's

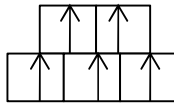
#### Quarter-Turn, Ashlar, Brick, Monolithic



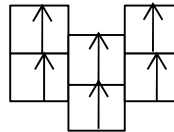
Monolithic



Quarter Turn



Brick



Ashlar

### Warranty Information

- Limited Lifetime Commercial Wear & Anti-Static
- Limited Lifetime Against Delamination
- Limited Lifetime on Dimensional Stability
- Limited Lifetime Against Backing Deterioration

### Environmental

Indoor air quality no. GLP 3315

Venture Carpets Inc. reserves the right to modify the specification to improve this product without prior notice and without prejudice