

Schluter®-VINPRO

Modern Profiles Designed for Resilient Surface Coverings



PROFILE OF INNOVATION

Finding a complementary transition for resilient flooring is now simplified with the Schluter®-VINPRO profiles series. Providing finishing, transition, and edge protection for resilient floor and wall coverings, VINPRO profiles increase design flexibility with long-lasting results. The VINPRO series combines several durable finish options in complementing colors, and features a modern, sleek look with a minimalist reveal that is ideal for enhancing and protecting resilient coverings.

- Durable edge protection and finishing profiles for resilient coverings (e.g.: LVT, LVP) used on floors, walls, and stairs
- Unobtrusive design which easily complements any resilient covering
- Accommodates various covering thicknesses from 1/8" to 1/2" (2.5 mm to 12.5 mm)
- Available in 3 brushed anodized aluminum finishes: bronze, nickel, and chrome
- Features a tapered anchoring leg with even hole spacing along the length of the profile for fastening
- Unique punch-out design allows the head of the fastener to be installed flush with the anchoring legs surface



Schluter®-VINPRO-S

Provides edge protection where the resilient covering is bordered by carpet, floor coverings of similar heights, or as a finishing edge to wall skirting applications.



Schluter®-VINPRO-T

Designed to provide transitions between same-height resilient floor coverings.



Schluter®-VINPRO-U

Designed to provide a smooth transition between resilient floor coverings and floor coverings at lower elevations or finished concrete.

Floor



Stair



Wall

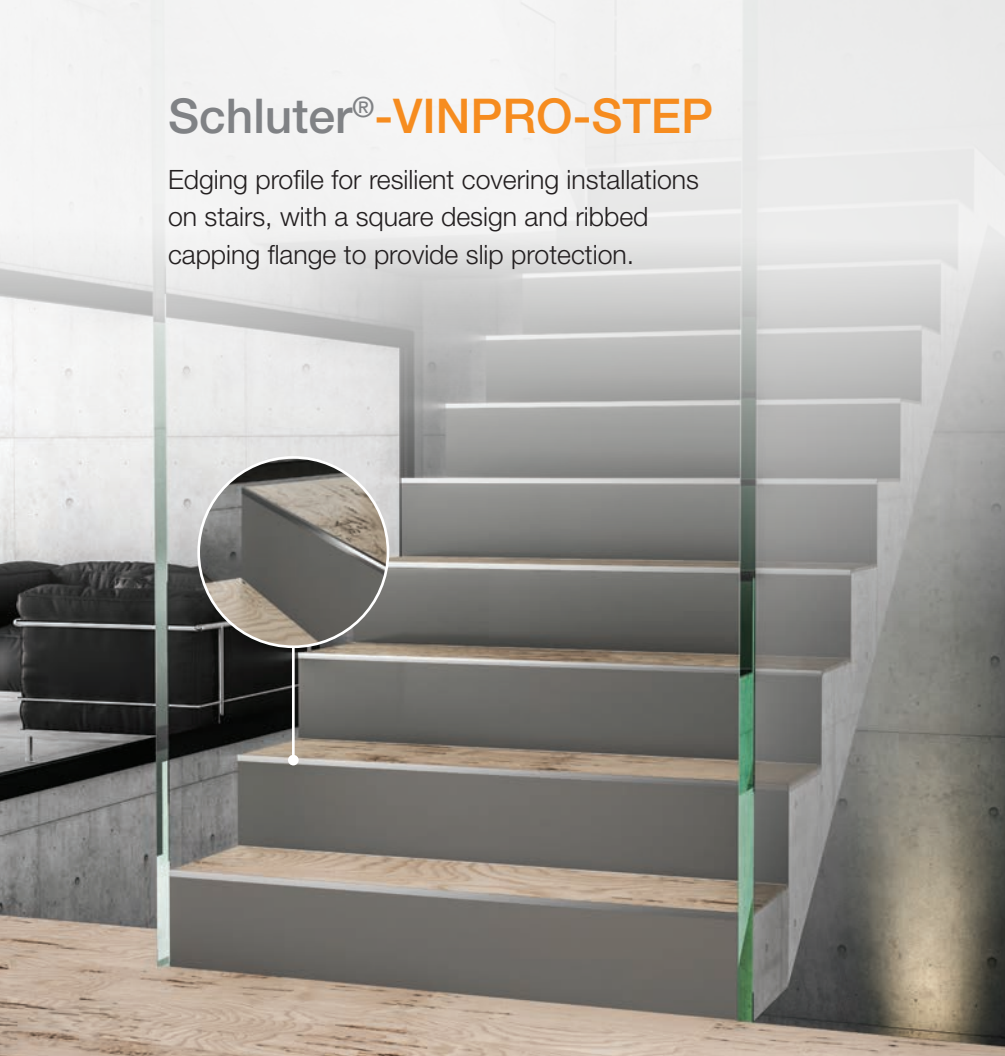


Schluter®-VINPRO-RO

Edging profile with rounded reveal for resilient covering installations on stairs and outside corners of resilient surfaces.

Schluter®-VINPRO-STEP

Edging profile for resilient covering installations on stairs, with a square design and ribbed capping flange to provide slip protection.



Schluter®-VINPRO-STEP-R

Edging profile for resilient covering installations on stairs with a rounded leading edge capping flange and elongated vertical section to provide visibility.





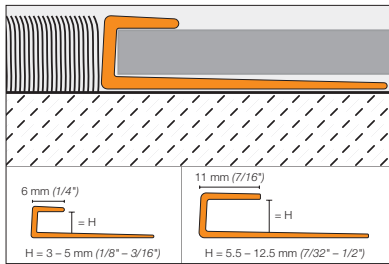
3
available
FINISHES

ACGB
Brushed chrome

ATGB
Brushed nickel

ABGB
Brushed antique
bronze

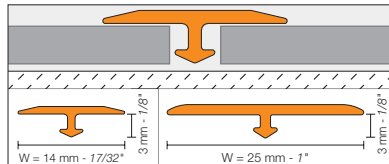
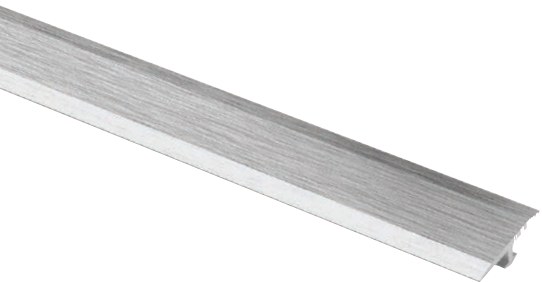




Schluter®-VINPRO-S

Finishing edge for same-height floor transition and wall skirting

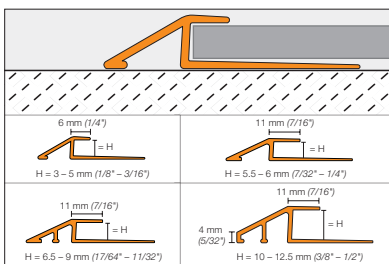
Length = 2.5 m - 8' 2-1/2"	Brushed chrome anodized aluminum (ACGB)	Brushed nickel anodized aluminum (ATGB)	Brushed antique bronze anodized aluminum (ABGB)
H = mm - in.	Item No.	Item No.	Item No.
3 - 1/8	VPS 30 ACGB	VPS 30 ATGB	VPS 30 ABGB
4 - 5/32	VPS 40 ACGB	VPS 40 ATGB	VPS 40 ABGB
5 - 3/16	VPS 50 ACGB	VPS 50 ATGB	VPS 50 ABGB
5.5 - 7/32	VPSL 55 ACGB	VPSL 55 ATGB	VPSL 55 ABGB
6 - 1/4	VPSL 60 ACGB	VPSL 60 ATGB	VPSL 60 ABGB
6.5 - 17/64	VPSL 65 ACGB	VPSL 65 ATGB	VPSL 65 ABGB
7 - 9/32	VPSL 70 ACGB	VPSL 70 ATGB	VPSL 70 ABGB
7.5 - 19/64	VPSL 75 ACGB	VPSL 75 ATGB	VPSL 75 ABGB
8 - 5/16	VPSL 80 ACGB	VPSL 80 ATGB	VPSL 80 ABGB
8.5 - 21/64	VPSL 85 ACGB	VPSL 85 ATGB	VPSL 85 ABGB
9 - 11/32	VPSL 90 ACGB	VPSL 90 ATGB	VPSL 90 ABGB
10 - 3/8	VPSL 100 ACGB	VPSL 100 ATGB	VPSL 100 ABGB
11 - 7/16	VPSL 110 ACGB	VPSL 110 ATGB	VPSL 110 ABGB
12.5 - 1/2	VPSL 125 ACGB	VPSL 125 ATGB	VPSL 125 ABGB



Schluter®-VINPRO-T

Same-height transition

Length = 2.5 m - 8' 2-1/2"	Brushed chrome anodized aluminum (ACGB)	Brushed nickel anodized aluminum (ATGB)	Brushed antique bronze anodized aluminum (ABGB)
W = mm - in.	Item No.	Item No.	Item No.
14 - 17/32	VPT 3/14 ACGB	VPT 3/14 ATGB	VPT 3/14 ABGB
25 - 1	VPT 3/25 ACGB	VPT 3/25 ATGB	VPT 3/25 ABGB

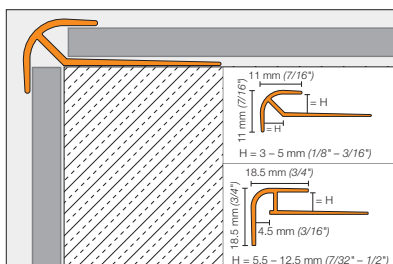


Schluter®-VINPRO-U

Lower adjacent floor transition

Length = 2.5 m - 8' 2-1/2"	Brushed chrome anodized aluminum (ACGB)	Brushed nickel anodized aluminum (ATGB)	Brushed antique bronze anodized aluminum (ABGB)
H = mm - in.	Item No.	Item No.	Item No.
3 - 1/8 *	VPU 30 ACGB	VPU 30 ATGB	VPU 30 ABGB
4 - 5/32 *	VPU 40 ACGB	VPU 40 ATGB	VPU 40 ABGB
5 - 3/16 *	VPU 50 ACGB	VPU 50 ATGB	VPU 50 ABGB
5.5 - 7/32	VPUL 55 ACGB	VPUL 55 ATGB	VPUL 55 ABGB
6 - 1/4	VPUL 60 ACGB	VPUL 60 ATGB	VPUL 60 ABGB
6.5 - 17/64	VPUL 65 ACGB	VPUL 65 ATGB	VPUL 65 ABGB
7 - 9/32	VPUL 70 ACGB	VPUL 70 ATGB	VPUL 70 ABGB
7.5 - 19/64	VPUL 75 ACGB	VPUL 75 ATGB	VPUL 75 ABGB
8 - 5/16	VPUL 80 ACGB	VPUL 80 ATGB	VPUL 80 ABGB
8.5 - 21/64	VPUL 85 ACGB	VPUL 85 ATGB	VPUL 85 ABGB
9 - 11/32	VPUL 90 ACGB	VPUL 90 ATGB	VPUL 90 ABGB
10 - 3/8	VPUL 100 ACGB	VPUL 100 ATGB	VPUL 100 ABGB
11 - 7/16	VPUL 110 ACGB	VPUL 110 ATGB	VPUL 110 ABGB
12.5 - 1/2	VPUL 125 ACGB	VPUL 125 ATGB	VPUL 125 ABGB

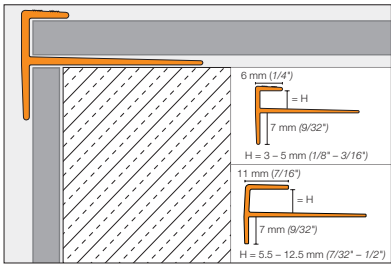
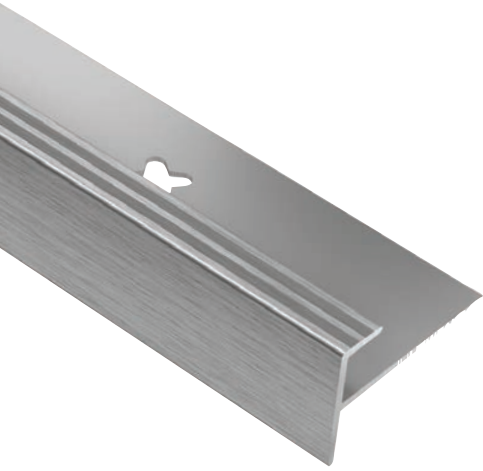
* ADA-Compliant



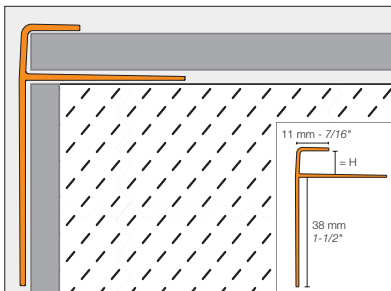
Schluter®-VINPRO-RO

Rounded edge for walls, outside corners, and stair treads

Length = 2.5 m - 8' 2-1/2"	Brushed chrome anodized aluminum (ACGB)	Brushed nickel anodized aluminum (ATGB)	Brushed antique bronze anodized aluminum (ABGB)
H = mm - in.	Item No.	Item No.	Item No.
3 - 1/8	VPRO 30 ACGB	VPRO 30 ATGB	VPRO 30 ABGB
4 - 5/32	VPRO 40 ACGB	VPRO 40 ATGB	VPRO 40 ABGB
5 - 3/16	VPRO 50 ACGB	VPRO 50 ATGB	VPRO 50 ABGB
5.5 - 7/32	VPROL 55 ACGB	VPROL 55 ATGB	VPROL 55 ABGB
6 - 1/4	VPROL 60 ACGB	VPROL 60 ATGB	VPROL 60 ABGB
6.5 - 17/64	VPROL 65 ACGB	VPROL 65 ATGB	VPROL 65 ABGB
7 - 9/32	VPROL 70 ACGB	VPROL 70 ATGB	VPROL 70 ABGB
7.5 - 19/64	VPROL 75 ACGB	VPROL 75 ATGB	VPROL 75 ABGB
8 - 5/16	VPROL 80 ACGB	VPROL 80 ATGB	VPROL 80 ABGB
8.5 - 21/64	VPROL 85 ACGB	VPROL 85 ATGB	VPROL 85 ABGB
9 - 11/32	VPROL 90 ACGB	VPROL 90 ATGB	VPROL 90 ABGB
10 - 3/8	VPROL 100 ACGB	VPROL 100 ATGB	VPROL 100 ABGB
11 - 7/16	VPROL 110 ACGB	VPROL 110 ATGB	VPROL 110 ABGB
12.5 - 1/2	VPROL 125 ACGB	VPROL 125 ATGB	VPROL 125 ABGB



Schluter®-VINPRO-STEP			
Finishing edge for stair treads			
Length = 2.5 m - 8' 2-1/2"	Brushed chrome anodized aluminum (ACGB)	Brushed nickel anodized aluminum (ATGB)	Brushed antique bronze anodized aluminum (ABGB)
H = mm - in.	Item No.	Item No.	Item No.
3 - 1/8	VPST 30 ACGB	VPST 30 ATGB	VPST 30 ABGB
4 - 5/32	VPST 40 ACGB	VPST 40 ATGB	VPST 40 ABGB
5 - 3/16	VPST 50 ACGB	VPST 50 ATGB	VPST 50 ABGB
5.5 - 7/32	VPSTL 55 ACGB	VPSTL 55 ATGB	VPSTL 55 ABGB
6 - 1/4	VPSTL 60 ACGB	VPSTL 60 ATGB	VPSTL 60 ABGB
6.5 - 17/64	VPSTL 65 ACGB	VPSTL 65 ATGB	VPSTL 65 ABGB
7 - 9/32	VPSTL 70 ACGB	VPSTL 70 ATGB	VPSTL 70 ABGB
7.5 - 19/64	VPSTL 75 ACGB	VPSTL 75 ATGB	VPSTL 75 ABGB
8 - 5/16	VPSTL 80 ACGB	VPSTL 80 ATGB	VPSTL 80 ABGB
8.5 - 21/64	VPSTL 85 ACGB	VPSTL 85 ATGB	VPSTL 85 ABGB
9 - 11/32	VPSTL 90 ACGB	VPSTL 90 ATGB	VPSTL 90 ABGB
10 - 3/8	VPSTL 100 ACGB	VPSTL 100 ATGB	VPSTL 100 ABGB
11 - 7/16	VPSTL 110 ACGB	VPSTL 110 ATGB	VPSTL 110 ABGB
12.5 - 1/2	VPSTL 125 ACGB	VPSTL 125 ATGB	VPSTL 125 ABGB



Schluter®-VINPRO-STEP-R			
Finishing edge for stair treads			
Length = 2.5 m - 8' 2-1/2"	Brushed chrome anodized aluminum (ACGB)	Brushed nickel anodized aluminum (ATGB)	Brushed antique bronze anodized aluminum (ABGB)
H = mm - in.	Item No.	Item No.	Item No.
3 - 1/8	VPSTRL 30 ACGB	VPSTRL 30 ATGB	VPSTRL 30 ABGB
4 - 5/32	VPSTRL 40 ACGB	VPSTRL 40 ATGB	VPSTRL 40 ABGB
5 - 3/16	VPSTRL 50 ACGB	VPSTRL 50 ATGB	VPSTRL 50 ABGB
5.5 - 7/32	VPSTRL 55 ACGB	VPSTRL 55 ATGB	VPSTRL 55 ABGB
6 - 1/4	VPSTRL 60 ACGB	VPSTRL 60 ATGB	VPSTRL 60 ABGB
6.5 - 17/64	VPSTRL 65 ACGB	VPSTRL 65 ATGB	VPSTRL 65 ABGB
7 - 9/32	VPSTRL 70 ACGB	VPSTRL 70 ATGB	VPSTRL 70 ABGB
7.5 - 19/64	VPSTRL 75 ACGB	VPSTRL 75 ATGB	VPSTRL 75 ABGB
8 - 5/16	VPSTRL 80 ACGB	VPSTRL 80 ATGB	VPSTRL 80 ABGB
8.5 - 21/64	VPSTRL 85 ACGB	VPSTRL 85 ATGB	VPSTRL 85 ABGB
9 - 11/32	VPSTRL 90 ACGB	VPSTRL 90 ATGB	VPSTRL 90 ABGB
10 - 3/8	VPSTRL 100 ACGB	VPSTRL 100 ATGB	VPSTRL 100 ABGB
11 - 7/16	VPSTRL 110 ACGB	VPSTRL 110 ATGB	VPSTRL 110 ABGB
12.5 - 1/2	VPSTRL 125 ACGB	VPSTRL 125 ATGB	VPSTRL 125 ABGB



For complete product information including CAD drawings and specification details, please visit our website:
www.schluter.com

For sample requests and ordering information please contact our Customer Support specialists at
US: 888-472-4588 or CA: 800-667-8746



VINPRO is a registered trademark of Schluter Systems.

© 2021 Schluter Systems L.P. and affiliates. All rights reserved.

11/2021

556387

