

Venture

Modular

Product Specifications

Style Name	Eruption
Style Number	40216
Surface Texture	Multilevel Loop
Pile Fibre Content	100% Aquafil BCF Anti-Static ECONYL nylon
Dye System	Solution Dyed
Primary Backing	Non-Woven Polyester
Secondary Backing	Fiberglass Reinforced Thermoplastic - PermaFuse Technology - Phthalate Free

	Imperial	Metric
Pile Weight	20.0 oz / s.y.	678 g/m2
Gauge	1/12 ga	47.2 / 10 cm
Stitches	12.0 / in.	47.2 / 10 cm
Pile Height	0.189 in.	4.8 mm
Pile Thickness	0.150 in.	3.8 mm
Density Factor	4800	9.18 ktex
Total Weight	111.04 oz / s.y.	3764 g/m2

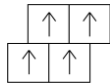
Performance Specifications

Flammability	Meets ASTM E-648 test standards Radiant Panel Class I
Smoke Density	Meets ASTM E-662 test standards <450 Flaming mode
Anti-Static Properties	Less than 3.0 kv at 20% R.H.. & 21° C
Dimensional Stability	Less than 0.05 %
Lightfastness	L5 or Better
Resistance to Wet Cleaning	Grey Scale 5
Acoustique ASTM-E3133	70
Acoustique ASTM-E492	60

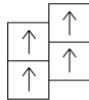
Installation Method's



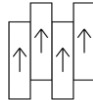
Quarter-Turn



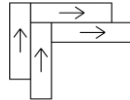
Brick



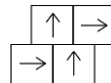
Ashlar



Classic



Herringbone



Non-directional

Warranty Information

- Lifetime Limited Commercial Wear & Anti-Static
- Lifetime Limited Commercial Against Delamination
- Lifetime Limited Commercial on Dimensional Stability
- Lifetime Limited Against Backing Deterioration

Environmental

Indoo air quality no. GLP 3315

Dimension

Carpet Tile (PermaFuse)	19.68" x 19.68"	50 cm x 50 cm
Plank (PermaFuse)	9.84" x 39.37"	25 cm x 100 cm
Broadloom (PermaFuse XL)	79.25"	201 cm
UNILOC Commercial Unitary Backing System	79.25"	201 cm
Pattern Repeat for Roll	81" x 81"	205.74 cm x 205.74 cm

Manufacturer reserves the right to modify the specification to improve this product without prior notice and without prejudice